

QSS-35 SERIES

QSS-3501/3502



**Compact
and Versatile**



NORITSU
DIGITAL INNOVATIONS AND CREATIVE SOLUTIONS

QSS-35 SERIES

QSS-3501/3502

They're Everything You've Asked for, and More!

We engineered the Noritsu QSS-3501 and QSS-3502 from the ground up to meet the demanding requirements of retail photofinishers.

The QSS-35 Series has a host of exciting new features that bring unprecedented flexibility and power to your photo department. Customizable layout options mean the QSS-35 Series is extremely adaptable to your floorplan. A streamlined, simple-to-use Operator Interface provides immediate productivity from your staff and reduces training time. Only the QSS-35 Series delivers quality prints with sharp, clear images and vibrant colors along with award-winning Noritsu performance and industry-leading reliability.



FAST PRINTING

up to **1,010** prints / hour
(4" x 6")

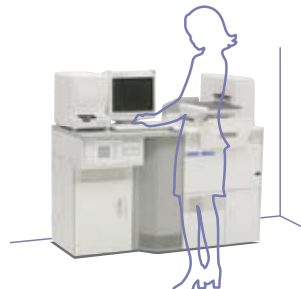
PRINTS UP TO

8 x 24 inches

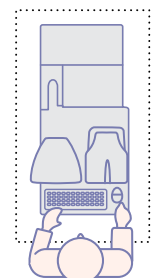
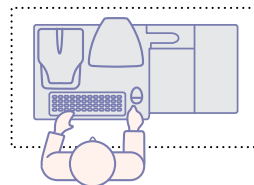
Flexible Layout and Small Footprint

The compact QSS-35 Series offers a variety of layout possibilities and options that can be customized to optimize floor space. A compact footprint of just 11 square feet makes these systems ideal for labs with limited space. The QSS-3501/3502 can be operated standing or sitting, and can even be deployed in an alternative side layout configuration for maximum space savings.

Conventional Layout



Alternative Layout



One Machine Takes Care of All Your Input/Output Needs.

Like other QSS minilabs, the QSS-35 Series supports input and output from multiple analog and digital sources, including input from digital camera media and film, output of value-added prints in various sizes, and output to DVD and other kinds of digital media.

- **LONGER PRINTS** — Outputs up to 8" x 24" for increased productivity.
- **PRINT TILING** — Lets you divide a large image into multiple sections, print them on paper, then join them together to make a photo larger than the printer's maximum print size.
- **TEMPLATE PRINTS** — Additional value template cards, I.D. cards, etc.
- **DVD WRITING** — Output from film, media or prints.



Develop film and scan it in one step with the optional One Pass System.

35mm One Pass System

Save time and increase productivity and revenue with the optional One Pass System. Just combine the QSF-T15 film processor and the S1-II scanner into one unit, then automatically process, scan and print 35mm film in one easy step.



Easy Operator Interface

Our new Easy Operator Interface makes the QSS-35 Series extremely simple to use, significantly reducing operator training time. More experienced operators can easily switch to the powerful QSS Interface.





Noritsu AccuSmart™ technology
corrects less than perfect shots.



AccuSmart™ is advanced image processing technology developed by Noritsu that automatically corrects images, producing high-quality prints.

Images are automatically evaluated using a combination of face recognition and scene/density recognition algorithms. Noritsu's matching technology improves color consistency by evaluating the type of photo paper used and optimizing images accordingly.

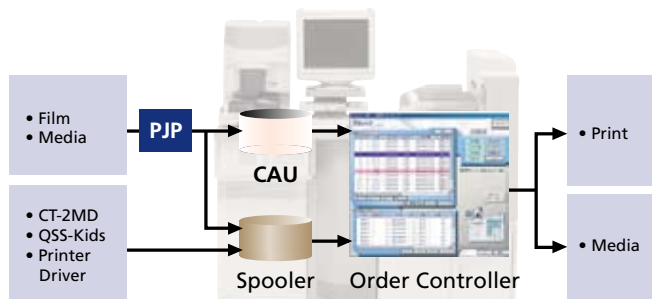
DIGITAL ICE™ and Digital Masking

DIGITAL ICE automatically detects and corrects dust and scratches on the base layer of film, restoring images to produce flawless prints. Digital masking software developed by Noritsu automatically corrects dust and scratches on the emulsion layer of film.



Optimized Workflow Features

- **INSTANT ORDER RECALL** — With the Compact Archive Unit (CAU) there's no need to rescan film or digital images. The CAU saves up to 160 recent customer orders, even if the system is shut down.



- **AUTO DAILY SET UP** — Using the program timer, the QSS-3501/3502 is ready to begin production when the operator arrives, saving time and labor.
- **ORDER CONTROLLER** — Allows multitasking workflow in a network print environment. Network orders from a kiosk or the Internet can be managed while simultaneously processing other scanned orders.



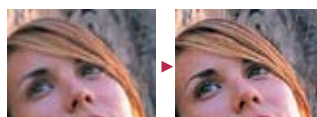
Digital technology to optimize image correction.

Powerful Image Correction

To ensure optimal print quality, image enhancement functions are built right in. These functions include color and backlit scene correction, sepia/B&W conversion, graininess and underexposure/overexposure correction.

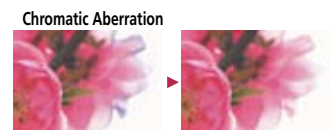
JPEG Block Noise Correction

Corrects blocking that occurs when an image is compressed, resulting in a smooth, natural-looking image.



Lens Aberration Correction

Corrects distortion, chromatic aberration and insufficient brightness at the edge of the image field that occurs in some cameras.



Optional Correction Software

Cross filter, soft filter and tone curve software are available as options.

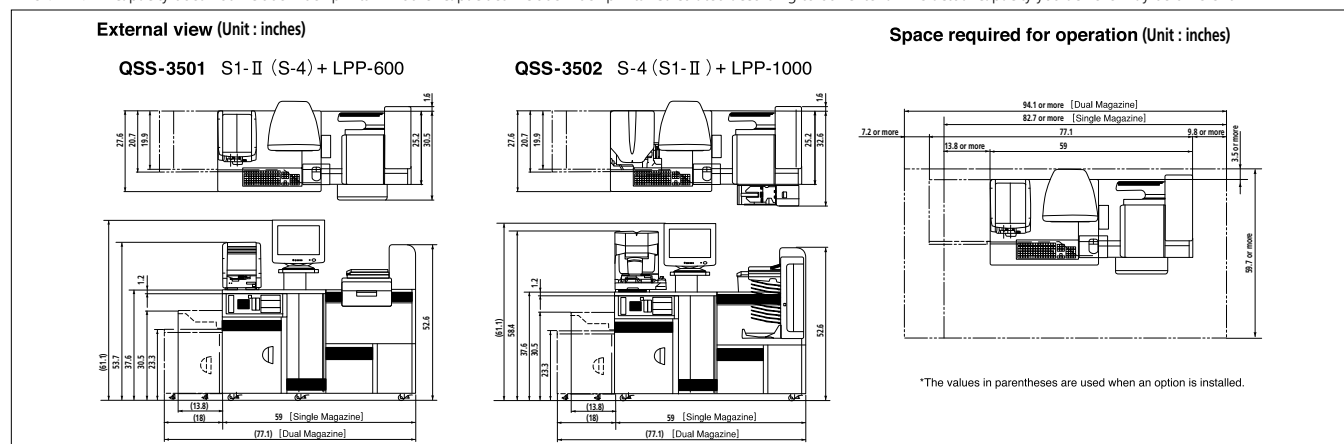
QSS-35 SERIES

QSS-3501/3502

QSS-3501 Specifications			QSS-3502
Film Types	S-4	Color negative and positive (including mounted), B&W negative (Chromogenic B&W), Sepia negative	Same as 3501
	S1-II	Color negative and positive, B&W negative (Chromogenic B&W), Sepia negative	Same as 3501
Film Size	S-4	110, 135F, 135H, 135P, 135FP, 135FPS, IX240, 6x4.5, 6x6, 6x7, 6x8, 6x9	Same as 3501
	S1-II	135F, 135H, 135P, 135FP, 135FPS, IX240	Same as 3501
Compatible Input Media	Standard	FD, CD-ROM, CD-R, CD-RW, DVD-ROM, DVD±R/RW	Same as 3501
	Optional	CompactFlash, Microdrive, SmartMedia, PC Card, SD Card, MMC, Mini SD Card, Memory Stick, Memory Stick Pro, Memory Stick Duo, Memory Stick Pro Duo, xD-Picture Card, USB Flash Memory, MO, ZIP, DVD-ROM, DVD-RAM, DVD±R/RW	Same as 3501
Compatible Output Media	Standard	FD	Same as 3501
	Optional	CD-R, CD-RW, CompactFlash, Microdrive, SmartMedia, PC Card, SD Card, MMC, Mini SD Card, Memory Stick, Memory Stick Pro, Memory Stick Duo, Memory Stick Pro Duo, xD-Picture Card, USB Flash Memory, MO, ZIP, DVD-RAM, DVD-R	Same as 3501
Exposure System		Laser scanning exposure by paper movement Laser class: Class 1 (EN60825-1)	Same as 3501
Print Resolution		300 dpi	Same as 3501
Exposure Speed		2.3 in. / sec.	Same as 3501
Print Sizes	Paper Width	3.25, 3.5, 4, 4.5, 4.6, 4.7, 5, 5.12, 6, 6.5, 7, 8, 8.27 (in.)	Same as 3501
	Paper Advance Length	3.25 to 24 (in.)	Same as 3501
Display Monitor		17 inch CRT monitor (option), 15 inch LCD monitor (option)	Same as 3501
Transport System		Roller transport	Same as 3501
Processing Speed		65 in. / min	Same as 3501
Paper Supply		Single magazine system / Dual magazine system (factory option)	Same as 3501
Paper Specifications		Maximum diameter of paper roll: 9.8 in.	Same as 3501
Water Refilling		Automatic water refilling	Same as 3501
Automatic Cleaning		Automatic clearing of turn racks	Same as 3501
Order Classification	Standard	Up to 3 orders	Can choose either 10 or 12 orders
	Optional	Can choose either 10 or 12 orders	
Dimensions		See "external view" below	Same as 3501
Power Capacity		200V – 240V 1P2W (18A – 17A) 200V – 240V 3P3W (12A – 11A)	Same as 3501
Weight	Scanner	Approx. 48.5 lbs. (S-4) / Approx. 38.6 lbs. (S1-II)	Same as 3501
	Printer Processor	Approx. 767.6 lbs. / Approx. 799.6 lbs. (SM)	Approx. 790.8 lbs. / Approx. 822.8 lbs.
ESTIMATED PROCESSING CAPACITY (PRINTS/HR)			
135 Negative Film (24 exp.)	3.5 x 5 in	Approx. 600	Approx. 1,090
	4 x 6 in.	Approx. 580	Approx. 1,010
	8 x 10 in.	Approx. 170	Approx. 360
IX240 Negative Film (25 exp.)	3.5 in paper width	Approx. 470	Approx. 990 (S-4) / Approx. 690 (S1-II)
Digital Camera*1	3.5 x 5 in	Approx. 600	Approx. 1,090
	4 x 6 in.	Approx. 580	Approx. 1,010
	8 x 10 in.	Approx. 170	Approx. 360

*1: 256MB SD Card. 2,592 x 1,944 pixels per image. JPEG image size: 1,814 KB to 2,221 KB.

The 8 x 10 in. capacity does not include index prints. All other capacities include index prints. Calculated according to our criteria. The actual capacity you achieve may be different.



The specifications, information and the appearance of the machine in this brochure are subject to change without notice.

NORITSU

DIGITAL INNOVATIONS AND CREATIVE SOLUTIONS

(800) 521-3686 x 219
www.noritsu.com



Our products have been manufactured under an ISO 9001-certified quality assurance system.

Noritsu America Corporation
 6900 Noritsu Avenue
 Buena Park, California 90620-1372
Eastern Regional Office
 336 Route 46 East
 Fairfield, New Jersey 07004-2429

Latin America Regional Office
 1800 N. Commerce Parkway, Suite 2
 Weston, Florida 33326
Government Sales Office
 118 Pebble Beach Circle,
 Charles Town, West Virginia 25914

Noritsu Canada Ltd.
 2680 Argentinia Road
 Mississauga, Ontario, Canada, L5N 5V4
Noritsu de México S.A. de C.V.
 Plaza Mayorazgo de Luyando No. 7
 Col. Xoco, Delegación Benito Juárez
 C.P. 03330 México, D.F.